

B. LOHSE.
Roofing.

No. 221,080.

Patented Oct. 28, 1879.

Fig.1.

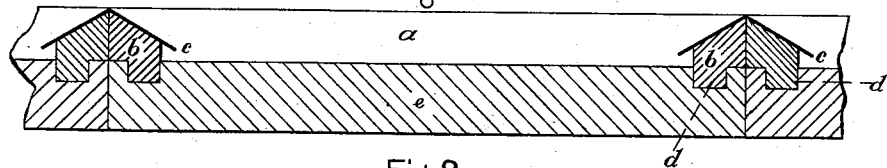


Fig.2.

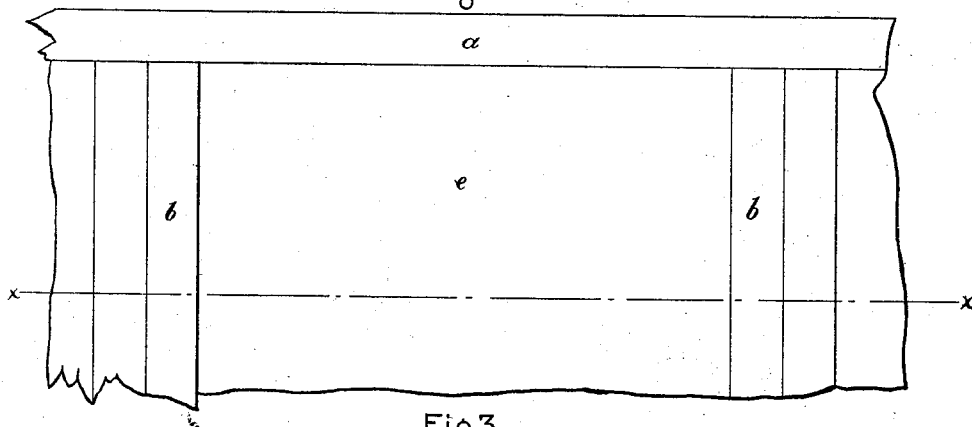


Fig.3.

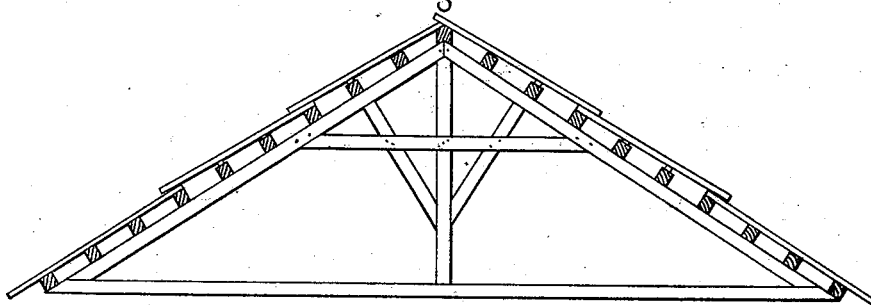
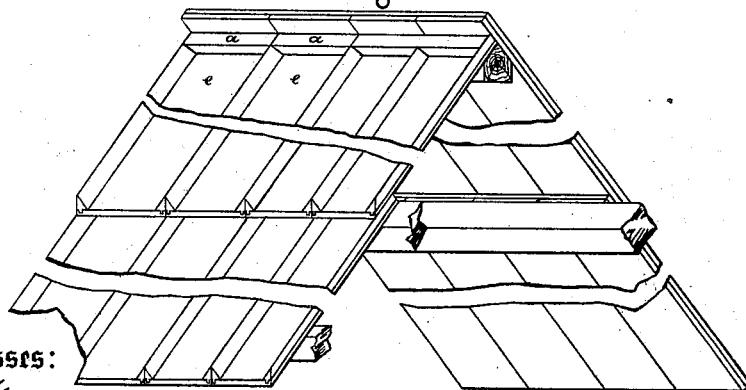


Fig.4.



Witnesses:

J. L. H. and
H. D. Fischer

Inventor:

Bernhardt Lohse
by *John A. Diederichsen*
ATTORNEY.

UNITED STATES PATENT OFFICE.

BERNHARDT LOHSE, OF NIEDERAU, NEAR MEISSEN, GERMANY.

IMPROVEMENT IN ROOFING.

Specification forming part of Letters Patent No. **221,080**, dated October 28, 1879; application filed July 26, 1879.

To all whom it may concern:

Be it known that I, BERNHARDT LOHSE, of Niederau, near Meissen, Germany, have invented a new and useful Improvement in Roofing, which improvement is fully set forth in the following specification and accompanying drawings, in which—

Figure 1 is a longitudinal vertical section in line *x x*, Fig. 2. Fig. 2 is a top or plan view of a portion of a roof embodying my invention. Fig. 3 is a side view thereof. Fig. 4 is a perspective view thereof.

Similar letters of reference indicate corresponding parts in the several figures.

My invention consists of roofing-boards and fillets connected by tongue-and-groove joints, and provided with a cap or covering, so as to prevent separation of the boards and roof and tightly close the joints between the same.

Referring to the drawings, *e* represents boards which are properly laid to form a roof, and *b* the fillets placed over the joints of adjacent boards, and secured thereto.

On the under side of the fillets are tongues *d*, and on the upper sides of the boards, adjacent to the sides thereof, are grooves *d'*, which receive said tongues.

A covering, *c*, of sheet metal is secured to the fillets *b*, and thus the joints of the fillets and of the boards are protected thereby.

It will be seen that should the boards swell, the fillets *b* and coverings *c* retain their places, and thus the boards are prevented from separation. Furthermore, as the joints of the boards and fillets are covered or protected, water, dust, &c., are prevented entering said joints, and thus a tight, dry roof is had.

In order to prepare the boards for roofing, I first steam them and then thoroughly dry them in a suitable stove or oven, whereby subsequent warping is prevented.

A suitable mineral fluid or material is then injected into the pores of the wood, using, preferably, chloride of zinc, whereby the boards are protected from rot and combustion.

My roof will be found to be light, cheap, and serviceable.

Having thus described my invention, what I claim as new and desire to secure by Letters Patent, is—

The boards *e* and fillets *b*, with tongue-and-groove connections *d d'*, in combination with a cap or covering, substantially as and for the purpose set forth.

BERNHARDT LOHSE.

Witnesses:

BERNHARD WOLF,
O. G. HÖFER.